

**Willow St between Cedar Hill Cross Rd and Borden St**  
**February 25, 2020 To February 27, 2020**



The data presented here is for information purposes only and should not be considered authoritative for construction, geotechnical, engineering, navigational, legal, or other site-specific uses. The information shared is owned by the Transportation Division of the Engineering Department at the District of Saanich. Accuracy is not guaranteed.

Start Date: 24-Feb-20  
 Start Time: 4:59  
 Station ID: R1215-01

**Location 1: Willow St between Cedar Hill Cross Rd and Borden St**

Note:

DATE:	February 24, 2020		February 25, 2020		February 26, 2020		February 27, 2020		February 28, 2020		WK AVG		WK AVG	HOURLY
	MON		TUE		WED		THURS		FRI		EB	WB	CH 1+2	%
Time:	EB	WB	EB	WB	EB	WB	EB	WB	EB	WB	EB	WB		
12-1 AM			0	0	0	0	1	1			0	0	1	0.8%
1-2 AM			0	0	0	0	0	0			0	0	0	0.0%
2-3 AM			0	0	0	1	0	0			0	0	0	0.4%
3-4 AM			0	0	1	0	0	0			0	0	0	0.4%
4-5 AM			0	1	0	1	0	0			0	1	1	0.8%
5-6 AM			1	2	2	1	1	3			1	2	3	4.0%
6-7 AM			1	2	0	3	2	1			1	2	3	3.6%
7-8 AM			4	3	4	3	2	3			3	3	6	7.6%
8-9 AM			2	4	2	7	2	2			2	4	6	7.6%
9-10 AM			0	2	0	4	1	2			0	3	3	3.6%
10-11 AM			1	0	2	1	1	2			1	1	2	2.8%
11-12 PM			3	6	0	2	2	3			2	4	5	6.4%
12-1 PM			2	1	2	2	1	2			2	2	3	4.0%
1-2 PM			4	4	4	3	3	2			4	3	7	8.0%
2-3 PM			4	2	3	0	6	7			4	3	7	8.8%
3-4 PM			3	4	2	4	2	3			2	4	6	7.2%
4-5 PM			7	3	5	6	5	3			6	4	10	11.6%
5-6 PM			4	1	4	0	0	0			3	0	3	3.6%
6-7 PM			1	2	3	1	4	2			3	2	4	5.2%
7-8 PM			2	1	1	1	2	1			2	1	3	3.2%
8-9 PM			1	2	1	1	2	0			1	1	2	2.8%
9-10 PM			2	2	1	0	1	3			1	2	3	3.6%
10-11 PM			1	1	0	1	4	1			2	1	3	3.2%
11-12 AM			1	0	0	1	0	0			0	0	1	0.8%
<b>LANES</b>			<b>44</b>	<b>43</b>	<b>37</b>	<b>43</b>	<b>42</b>	<b>41</b>			<b>41</b>	<b>42</b>	<b>83</b>	<b>100.0%</b>
<b>TOTAL</b>			<b>87</b>		<b>80</b>		<b>83</b>				<b>90</b>			
	MON		TUE		WED		THURS		FRI		WK AVG			

PEAK HOUR					TOTAL VEHICALS-PEAK PERIODS		2 HOUR PEAK INTERVALS			
MAX. 7 - 9 am PEAK HOUR	6	⇒	7.6%	between 7-8 AM	34	⇒ 6 HR TOTAL	<b>2 HR AM (7 - 9 AM)</b>			
MAX. 7 - 11 am PEAK HOUR	6	⇒	7.6%	between 7-8 AM	25	⇒ 4 HR TOTAL	VEH / HR	VEH / 2HR	2 HR %	
							7-8 AM	6	13	15.2%
							8-9 AM	6		
MAX. 11 am - 1 pm PEAK HOUR	5	⇒	6.4%	between 11-12 PM	<b>24 HOUR FACTORS</b>		<b>2 HR NOON (11 - 1 PM)</b>			
MAX. 11 am - 3 pm PEAK HOUR	7	⇒	8.8%	between 2-3 PM			VEH / HR	VEH / 2HR	2 HR %	
							11-12 PM	5	9	10.4%
MAX. 4 - 6 pm PEAK HOUR	10	⇒	11.6%	between 4-5 PM	2.45	⇒ 6-24 HR FACT.	12-1 PM	3		
MAX. 3 - 6 pm PEAK HOUR	10	⇒	11.6%	between 4-5 PM	3.29	⇒ 4-24 HR FACT.	<b>2 HR PM (4 - 6 PM)</b>			
							VEH / HR	VEH / 2HR	2 HR %	
							4-5 PM	10	13	15.2%
							5-6 PM	3		

**Willow St between Cedar Hill Cross Rd and Borden St**

Westbound

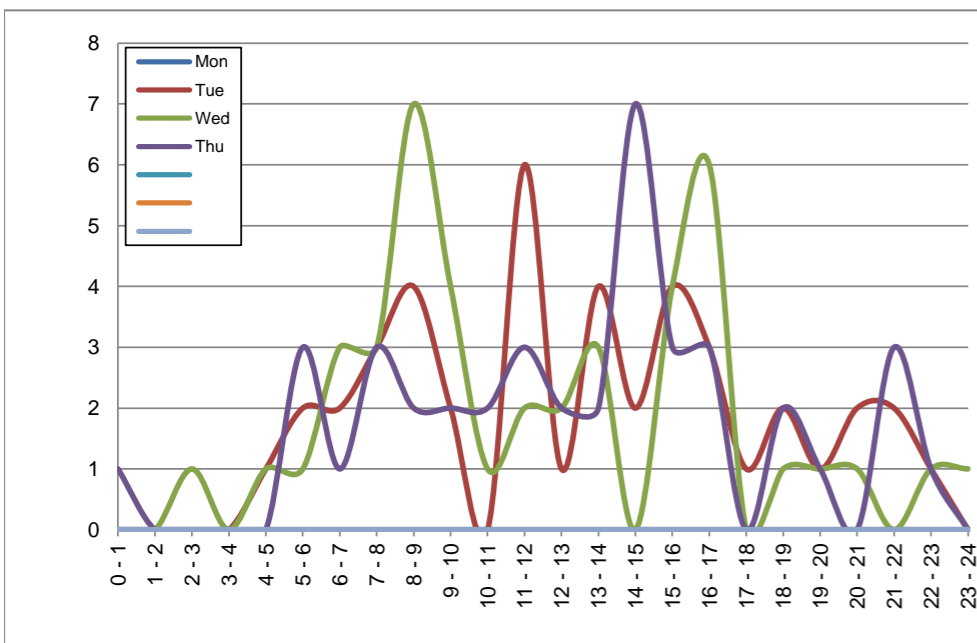
February 24, 2020 to February 27, 2020

**Hourly Volumes**

Time Period	Mon	Tue	Wed	Thu			
	Feb 24	Feb 25	Feb 26	Feb 27			
0 - 1		0	0	1			
1 - 2		0	0	0			
2 - 3		0	1	0			
3 - 4		0	0	0			
4 - 5		1	1	0			
5 - 6		2	1	3			
6 - 7		2	3	1			
7 - 8		3	3	3			
8 - 9		4	7	2			
9 - 10		2	4	2			
10 - 11		0	1	2			
11 - 12		6	2	3			
12 - 13		1	2	2			
13 - 14		4	3	2			
14 - 15		2	0	7			
15 - 16		4	4	3			
16 - 17		3	6	3			
17 - 18		1	0	0			
18 - 19		2	1	2			
19 - 20		1	1	1			
20 - 21		2	1	0			
21 - 22		2	0	3			
22 - 23		1	1	1			
23 - 24		0	1	0			
<b>Day Total</b>		<b>43</b>	<b>43</b>	<b>41</b>			

**15-Minute Volumes**

Time Start	Mon	Tue	Wed	Thu				Time Start	Mon	Tue	Wed	Thu			
	Feb 24	Feb 25	Feb 26	Feb 27					Feb 24	Feb 25	Feb 26	Feb 27			
0:00		0	0	1				12:00		0	0	0			
0:15		0	0	0				12:15		0	1	1			
0:30		0	0	0				12:30		1	0	1			
0:45		0	0	0				12:45		0	1	0			
1:00		0	0	0				13:00		3	0	0			
1:15		0	0	0				13:15		0	1	0			
1:30		0	0	0				13:30		1	0	0			
1:45		0	0	0				13:45		0	2	2			
2:00		0	1	0				14:00		1	0	3			
2:15		0	0	0				14:15		1	0	2			
2:30		0	0	0				14:30		0	0	0			
2:45		0	0	0				14:45		0	0	2			
3:00		0	0	0				15:00		2	0	1			
3:15		0	0	0				15:15		1	0	1			
3:30		0	0	0				15:30		0	3	0			
3:45		0	0	0				15:45		1	1	1			
4:00		0	0	0				16:00		0	2	0			
4:15		0	0	0				16:15		1	2	0			
4:30		0	0	0				16:30		2	1	2			
4:45		1	1	0				16:45		0	1	1			
5:00		0	0	1				17:00		1	0	0			
5:15		0	0	0				17:15		0	0	0			
5:30		2	1	1				17:30		0	0	0			
5:45		0	0	1				17:45		0	0	0			
6:00		0	1	0				18:00		0	0	1			
6:15		0	0	0				18:15		1	1	0			
6:30		1	1	0				18:30		0	0	1			
6:45		1	1	1				18:45		1	0	0			
7:00		0	0	0				19:00		0	0	0			
7:15		1	1	1				19:15		0	0	1			
7:30		1	2	1				19:30		1	1	0			
7:45		1	0	1				19:45		0	0	0			
8:00		1	4	0				20:00		0	1	0			
8:15		1	0	2				20:15		1	0	0			
8:30		1	1	0				20:30		0	0	0			
8:45		1	2	0				20:45		1	0	0			
9:00		2	1	0				21:00		0	0	0			
9:15		0	0	1				21:15		1	0	2			
9:30		0	3	0				21:30		0	0	1			
9:45		0	0	1				21:45		1	0	0			
10:00		0	0	1				22:00		0	0	0			
10:15		0	0	1				22:15		0	0	1			
10:30		0	1	0				22:30		0	1	0			
10:45		0	0	0				22:45		1	0	0			
11:00		1	0	2				23:00		0	1	0			
11:15		2	2	0				23:15		0	0	0			
11:30		2	0	0				23:30		0	0	0			
11:45		1	0	1				23:45		0	0	0			



Site notes:

**Willow St between Cedar Hill Cross Rd and Borden St**

**Eastbound**

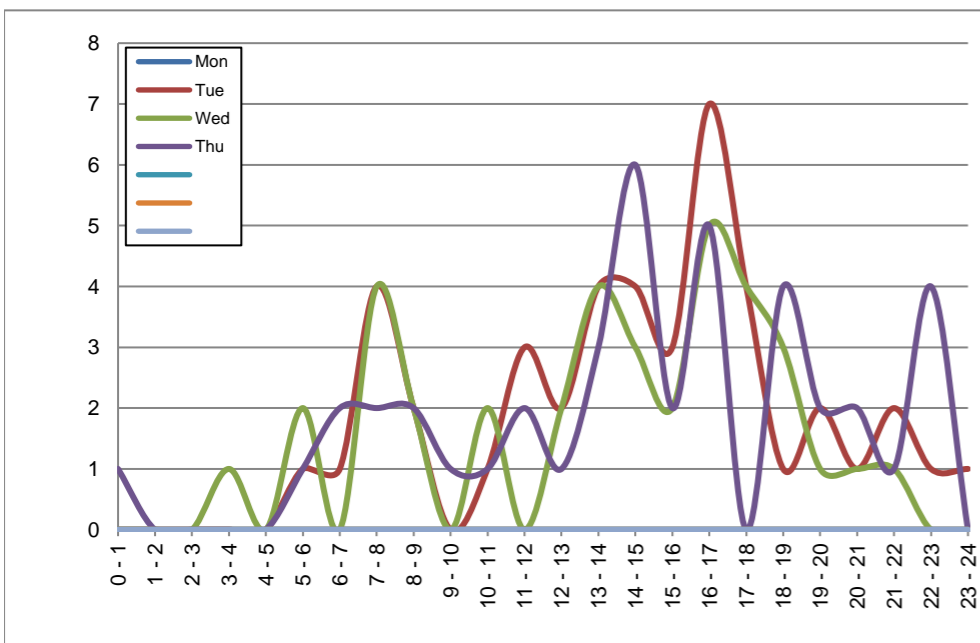
February 24, 2020 to February 27, 2020

**Hourly Volumes**

Time Period	Mon	Tue	Wed	Thu			
	Feb 24	Feb 25	Feb 26	Feb 27			
0 - 1		0	0	1			
1 - 2		0	0	0			
2 - 3		0	0	0			
3 - 4		0	1	0			
4 - 5		0	0	0			
5 - 6		1	2	1			
6 - 7		1	0	2			
7 - 8		4	4	2			
8 - 9		2	2	2			
9 - 10		0	0	1			
10 - 11		1	2	1			
11 - 12		3	0	2			
12 - 13		2	2	1			
13 - 14		4	4	3			
14 - 15		4	3	6			
15 - 16		3	2	2			
16 - 17		7	5	5			
17 - 18		4	4	0			
18 - 19		1	3	4			
19 - 20		2	1	2			
20 - 21		1	1	2			
21 - 22		2	1	1			
22 - 23		1	0	4			
23 - 24		1	0	0			
<b>Day Total</b>		<b>44</b>	<b>37</b>	<b>42</b>			

**15-Minute Volumes**

Time Start	Mon	Tue	Wed	Thu				Time Start	Mon	Tue	Wed	Thu			
	Feb 24	Feb 25	Feb 26	Feb 27					Feb 24	Feb 25	Feb 26	Feb 27			
0:00		0	0	0				12:00		0	0	0			
0:15		0	0	1				12:15		1	1	0			
0:30		0	0	0				12:30		1	1	1			
0:45		0	0	0				12:45		0	0	0			
1:00		0	0	0				13:00		1	0	0			
1:15		0	0	0				13:15		0	1	0			
1:30		0	0	0				13:30		1	1	3			
1:45		0	0	0				13:45		2	2	0			
2:00		0	0	0				14:00		1	0	3			
2:15		0	0	0				14:15		2	0	1			
2:30		0	0	0				14:30		1	1	0			
2:45		0	0	0				14:45		0	2	2			
3:00		0	1	0				15:00		1	0	1			
3:15		0	0	0				15:15		0	0	0			
3:30		0	0	0				15:30		2	2	1			
3:45		0	0	0				15:45		0	0	0			
4:00		0	0	0				16:00		0	1	0			
4:15		0	0	0				16:15		4	2	2			
4:30		0	0	0				16:30		1	1	2			
4:45		0	0	0				16:45		2	1	1			
5:00		0	0	0				17:00		3	1	0			
5:15		0	0	0				17:15		0	0	0			
5:30		1	0	0				17:30		1	1	0			
5:45		0	2	1				17:45		0	2	0			
6:00		1	0	1				18:00		0	0	0			
6:15		0	0	0				18:15		0	1	1			
6:30		0	0	0				18:30		0	2	2			
6:45		0	0	1				18:45		1	0	1			
7:00		1	1	0				19:00		0	1	0			
7:15		2	0	1				19:15		0	0	1			
7:30		1	2	0				19:30		1	0	1			
7:45		0	1	1				19:45		1	0	0			
8:00		1	1	0				20:00		0	0	1			
8:15		0	0	0				20:15		0	0	0			
8:30		1	1	2				20:30		0	1	1			
8:45		0	0	0				20:45		1	0	0			
9:00		0	0	0				21:00		0	0	0			
9:15		0	0	0				21:15		1	0	1			
9:30		0	0	0				21:30		1	0	0			
9:45		0	0	1				21:45		0	1	0			
10:00		1	0	0				22:00		1	0	1			
10:15		0	0	0				22:15		0	0	2			
10:30		0	2	0				22:30		0	0	1			
10:45		0	0	1				22:45		0	0	0			
11:00		1	0	1				23:00		0	0	0			
11:15		1	0	0				23:15		0	0	0			
11:30		1	0	0				23:30		0	0	0			
11:45		0	0	1				23:45		1	0	0			



Site notes:

# Vehicle Speed Summary

Saanich Engineering Department

Count Id: [R1215-01](#)

Filename: [Willow St between Cedar Hill Cross Rd and Borden St-Feb-2020.xlsm](#)

**Location:** Willow St between Cedar Hill Cross Rd and Borden St

Note:

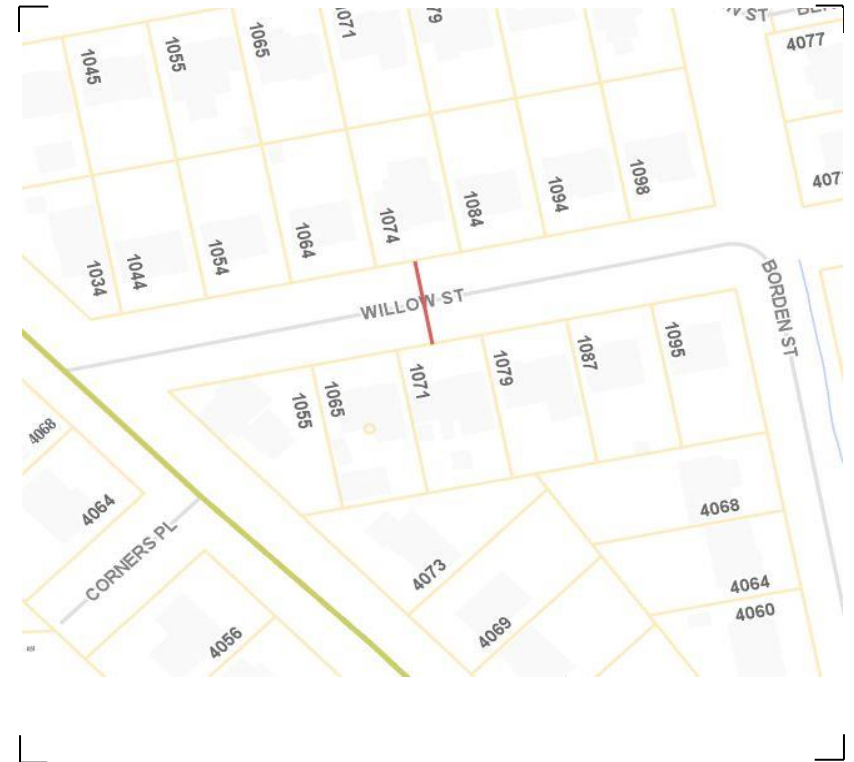
Direction: **East-West**

Dates: **February 25, 2020 To February 27, 2020**

*Filtered data*

AVG. SPEED	<b>13</b> mph	<b>21</b> km/h
50 % SPEED	<b>13</b> mph	<b>20</b> km/h
85 % SPEED	<b>17</b> mph	<b>28</b> km/h
95 % SPEED	<b>20</b> mph	<b>32</b> km/h

Location Map



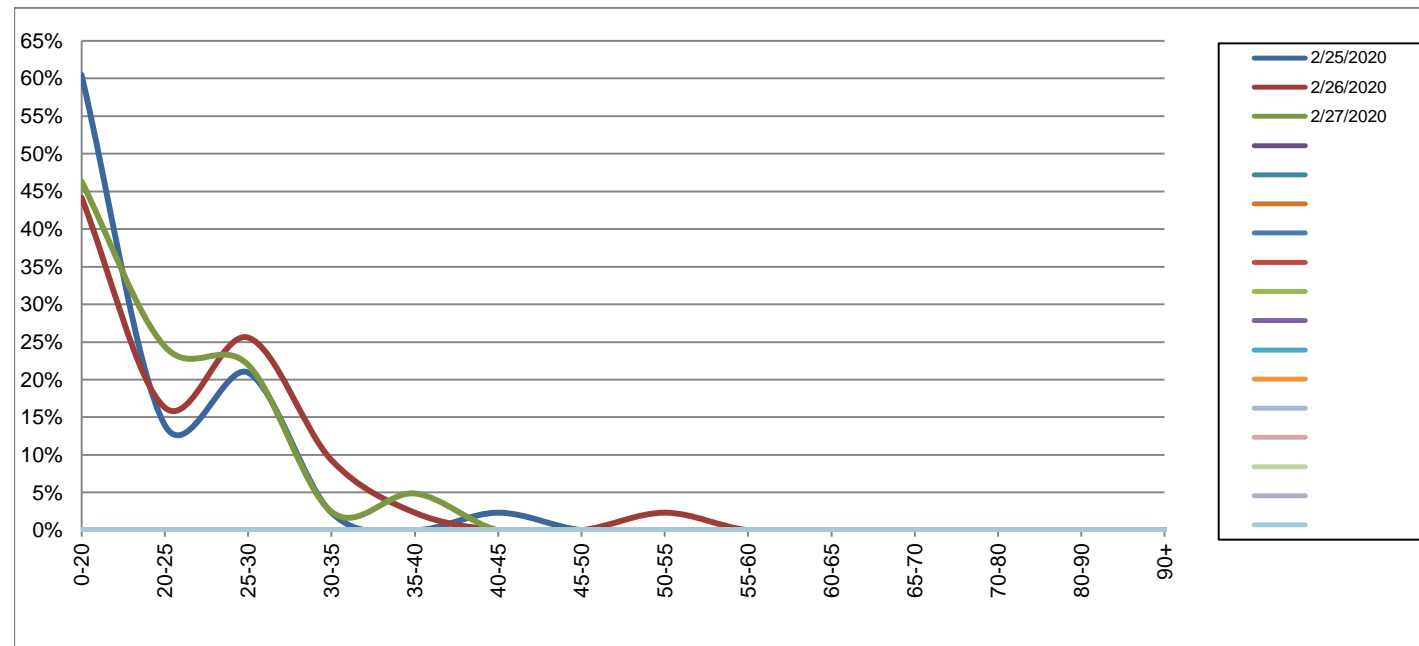
**Willow St between Cedar Hill Cross Rd and Borden St**

Westbound  
February 25, 2020 to February 27, 2020

Daily Speed Bin Percentages															Daily Speed Bin Volumes														Total	Avg. Speed
Bin #	1	2	3	4	5	6	7	8	9	10	11	12	13	14	1	2	3	4	5	6	7	8	9	10	11	12	13	14		
Bin Speeds	0-20	20-25	25-30	30-35	35-40	40-45	45-50	50-55	55-60	60-65	65-70	70-80	80-90	90+	0-20	20-25	25-30	30-35	35-40	40-45	45-50	50-55	55-60	60-65	65-70	70-80	80-90	90+		
2/25/2020	60.5%	14.0%	20.9%	2.3%	0.0%	2.3%	0.0%	0.0%	0.0%	0.0%	0.0%	0.0%	0.0%	0.0%	26	6	9	1	0	1	0	0	0	0	0	0	0	0	43	17
2/26/2020	44.2%	16.3%	25.6%	9.3%	2.3%	0.0%	0.0%	2.3%	0.0%	0.0%	0.0%	0.0%	0.0%	0.0%	19	7	11	4	1	0	0	1	0	0	0	0	0	0	43	20
2/27/2020	46.3%	24.4%	22.0%	2.4%	4.9%	0.0%	0.0%	0.0%	0.0%	0.0%	0.0%	0.0%	0.0%	0.0%	19	10	9	1	2	0	0	0	0	0	0	0	0	0	41	19
<b>Total</b>	<b>50.4%</b>	<b>18.1%</b>	<b>22.8%</b>	<b>4.7%</b>	<b>2.4%</b>	<b>0.8%</b>	<b>0.0%</b>	<b>0.8%</b>	<b>0.0%</b>	<b>0.0%</b>	<b>0.0%</b>	<b>0.0%</b>	<b>0.0%</b>	<b>0.0%</b>	<b>64</b>	<b>23</b>	<b>29</b>	<b>6</b>	<b>3</b>	<b>1</b>	<b>0</b>	<b>1</b>	<b>0</b>	<b>0</b>	<b>0</b>	<b>0</b>	<b>0</b>	<b>0</b>	<b>127</b>	<b>19</b>

**Speed Data Summary**

Bin #	1	2	3	4	5	6	7	8	9	10	11	12	13	14	Total
Bin Speeds	0-20	20-25	25-30	30-35	35-40	40-45	45-50	50-55	55-60	60-65	65-70	70-80	80-90	90+	
Survey Total	64	23	29	6	3	1	0	1	0	0	0	0	0	0	127
% Total	50.4%	18.1%	22.8%	4.7%	2.4%	0.8%	0.0%	0.8%	0.0%	0.0%	0.0%	0.0%	0.0%	0.0%	100%
Accumulated %	50.4%	68.5%	91.3%	96.1%	98.4%	99.2%	99.2%	100.0%	100.0%	100.0%	100.0%	100.0%	100.0%	100.0%	
Inverse Accum. %	49.6%	31.5%	8.7%	3.9%	1.6%	0.8%	0.8%	0.0%	0.0%	0.0%	0.0%	0.0%	0.0%	0.0%	
Average Speed	19 KM/H														



Site notes:

**Willow St between Cedar Hill Cross Rd and Borden St**

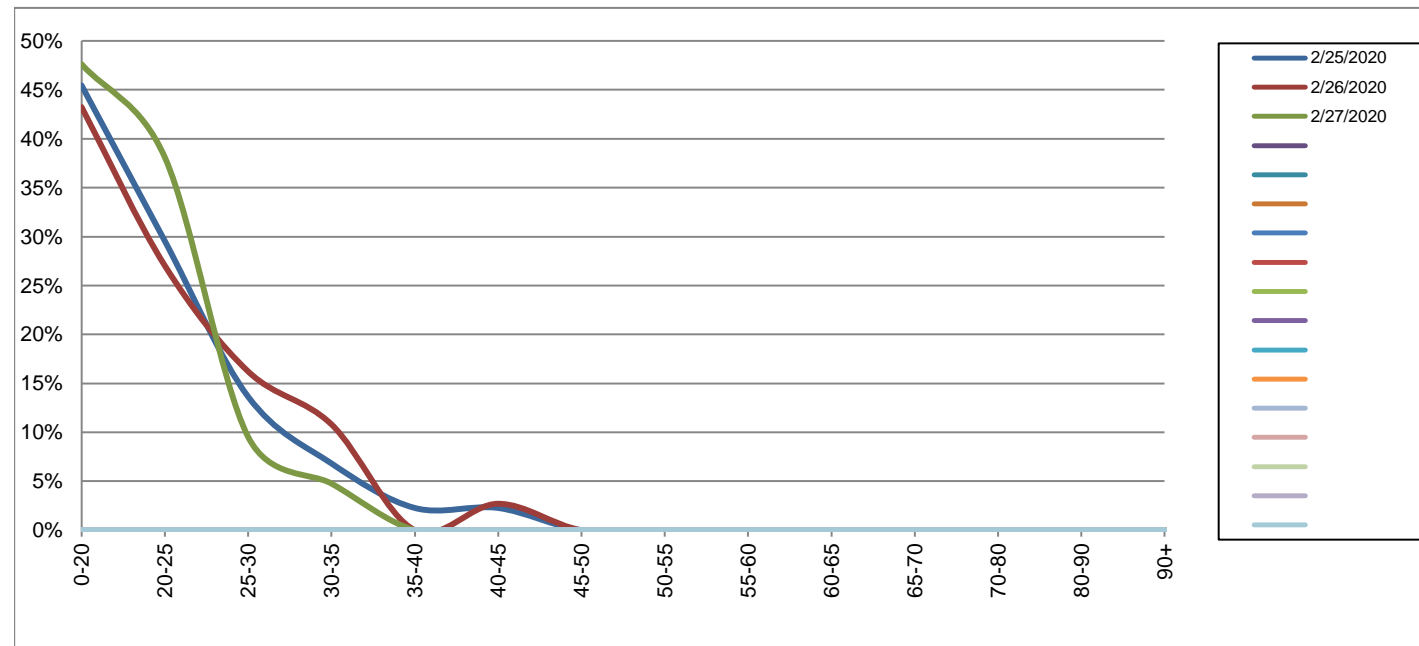
Eastbound

February 25, 2020 to February 27, 2020

Daily Speed Bin Percentages															Daily Speed Bin Volumes														Total	Avg. Speed
Bin #	1	2	3	4	5	6	7	8	9	10	11	12	13	14	1	2	3	4	5	6	7	8	9	10	11	12	13	14		
Bin Speeds	0-20	20-25	25-30	30-35	35-40	40-45	45-50	50-55	55-60	60-65	65-70	70-80	80-90	90+	0-20	20-25	25-30	30-35	35-40	40-45	45-50	50-55	55-60	60-65	65-70	70-80	80-90	90+		
2/25/2020	45.5%	29.5%	13.6%	6.8%	2.3%	2.3%	0.0%	0.0%	0.0%	0.0%	0.0%	0.0%	0.0%	0.0%	20	13	6	3	1	1	0	0	0	0	0	0	0	0	44	19
2/26/2020	43.2%	27.0%	16.2%	10.8%	0.0%	2.7%	0.0%	0.0%	0.0%	0.0%	0.0%	0.0%	0.0%	0.0%	16	10	6	4	0	1	0	0	0	0	0	0	0	0	37	20
2/27/2020	47.6%	38.1%	9.5%	4.8%	0.0%	0.0%	0.0%	0.0%	0.0%	0.0%	0.0%	0.0%	0.0%	0.0%	20	16	4	2	0	0	0	0	0	0	0	0	0	42	18	
<b>Total</b>	<b>45.5%</b>	<b>31.7%</b>	<b>13.0%</b>	<b>7.3%</b>	<b>0.8%</b>	<b>1.6%</b>	<b>0.0%</b>	<b>0.0%</b>	<b>0.0%</b>	<b>0.0%</b>	<b>0.0%</b>	<b>0.0%</b>	<b>0.0%</b>	<b>0.0%</b>	<b>56</b>	<b>39</b>	<b>16</b>	<b>9</b>	<b>1</b>	<b>2</b>	<b>0</b>	<b>0</b>	<b>0</b>	<b>0</b>	<b>0</b>	<b>0</b>	<b>0</b>	<b>0</b>	<b>123</b>	<b>19</b>

**Speed Data Summary**

Bin #	1	2	3	4	5	6	7	8	9	10	11	12	13	14	Total
Bin Speeds	0-20	20-25	25-30	30-35	35-40	40-45	45-50	50-55	55-60	60-65	65-70	70-80	80-90	90+	
Survey Total	56	39	16	9	1	2	0	0	0	0	0	0	0	0	123
% Total	45.5%	31.7%	13.0%	7.3%	0.8%	1.6%	0.0%	0.0%	0.0%	0.0%	0.0%	0.0%	0.0%	0.0%	100%
Accumulated %	45.5%	77.2%	90.2%	97.6%	98.4%	100.0%	100.0%	100.0%	100.0%	100.0%	100.0%	100.0%	100.0%	100.0%	
Inverse Accum. %	54.5%	22.8%	9.8%	2.4%	1.6%	0.0%	0.0%	0.0%	0.0%	0.0%	0.0%	0.0%	0.0%	0.0%	
Average Speed	19 KM/H														



Site notes:

**Willow St between Cedar Hill Cross Rd and Borden St**

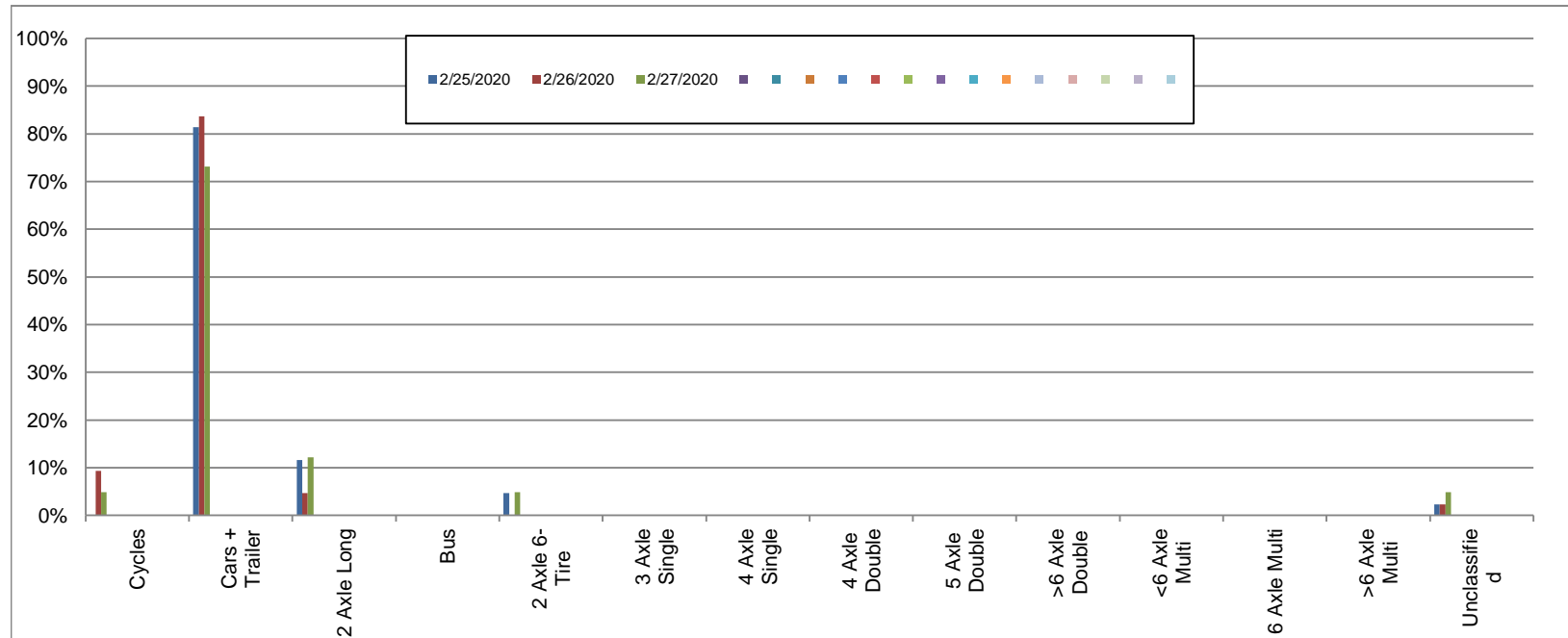
Westbound

February 25, 2020 to February 27, 2020

Daily Class Bin Percentages															Daily Class Bin Volumes															
Bin #	1	2	3	4	5	6	7	8	9	10	11	12	13	14	1	2	3	4	5	6	7	8	9	10	11	12	13	14	Total	
Bin Class	Cycles	Cars + Trailer	2 Axle Long	Bus	2 Axle 6-Tire	3 Axle Single	4 Axle Single	4 Axle Double	5 Axle Double	>6 Axle Double	<6 Axle Multi	6 Axle Multi	>6 Axle Multi	Unclassified	Cycles	Cars + Trailer	2 Axle Long	Bus	2 Axle 6-Tire	3 Axle Single	4 Axle Single	4 Axle Double	5 Axle Double	>6 Axle Double	<6 Axle Multi	6 Axle Multi	>6 Axle Multi	Unclassified	Total Volume	
2/25/2020	0.0%	81.4%	11.6%	0.0%	4.7%	0.0%	0.0%	0.0%	0.0%	0.0%	0.0%	0.0%	0.0%	2.3%	0	35	5	0	2	0	0	0	0	0	0	0	0	0	1	43
2/26/2020	9.3%	83.7%	4.7%	0.0%	0.0%	0.0%	0.0%	0.0%	0.0%	0.0%	0.0%	0.0%	0.0%	2.3%	4	36	2	0	0	0	0	0	0	0	0	0	0	0	1	43
2/27/2020	4.9%	73.2%	12.2%	0.0%	4.9%	0.0%	0.0%	0.0%	0.0%	0.0%	0.0%	0.0%	0.0%	4.9%	2	30	5	0	2	0	0	0	0	0	0	0	0	0	2	41
<b>Total</b>	<b>4.7%</b>	<b>79.5%</b>	<b>9.4%</b>	<b>0.0%</b>	<b>3.1%</b>	<b>0.0%</b>	<b>0.0%</b>	<b>0.0%</b>	<b>0.0%</b>	<b>0.0%</b>	<b>0.0%</b>	<b>0.0%</b>	<b>0.0%</b>	<b>3.1%</b>	<b>6</b>	<b>101</b>	<b>12</b>	<b>0</b>	<b>4</b>	<b>0</b>	<b>0</b>	<b>0</b>	<b>0</b>	<b>0</b>	<b>0</b>	<b>0</b>	<b>0</b>	<b>0</b>	<b>4</b>	<b>127</b>

**Class Data Summary**

Bin #	1	2	3	4	5	6	7	8	9	10	11	12	13	14	Total
Bin Class	Cycles	Cars + Trailer	2 Axle Long	Bus	2 Axle 6-Tire	3 Axle Single	4 Axle Single	4 Axle Double	5 Axle Double	>6 Axle Double	<6 Axle Multi	6 Axle Multi	>6 Axle Multi	Unclassified	Total Volume
<b>Survey Total</b>	6	101	12	0	4	0	0	0	0	0	0	0	0	4	127
<b>% Total</b>	4.7%	79.5%	9.4%	0.0%	3.1%	0.0%	0.0%	0.0%	0.0%	0.0%	0.0%	0.0%	0.0%	3.1%	100%
<b>Accumulated %</b>	4.7%	84.3%	93.7%	93.7%	96.9%	96.9%	96.9%	96.9%	96.9%	96.9%	96.9%	96.9%	96.9%	100.0%	
<b>Inv. Accum. %</b>	95.3%	15.7%	6.3%	6.3%	3.1%	3.1%	3.1%	3.1%	3.1%	3.1%	3.1%	3.1%	3.1%	0.0%	



**Classification Descriptions**

Bin #	Bin Description
1	Motorcycles
2	Passenger cars, including those with recreational trailers
3	2-axle pick-ups, vans, and RVs, including those with recreational trailers
4	Buses
5	2-axle, 6-tire single units
6	3-axle single units
7	4-axle single units
8	3-axle or 4-axle double unit
9	5-axle double unit
10	6-, 7-, or 8-axle double unit
11	5-axle multiple unit
12	6-axle multiple unit
13	7-or-more-axle multiple unit
14	Vehicles that could not be classified

Site notes:



**Willow St between Cedar Hill Cross Rd and Borden St**

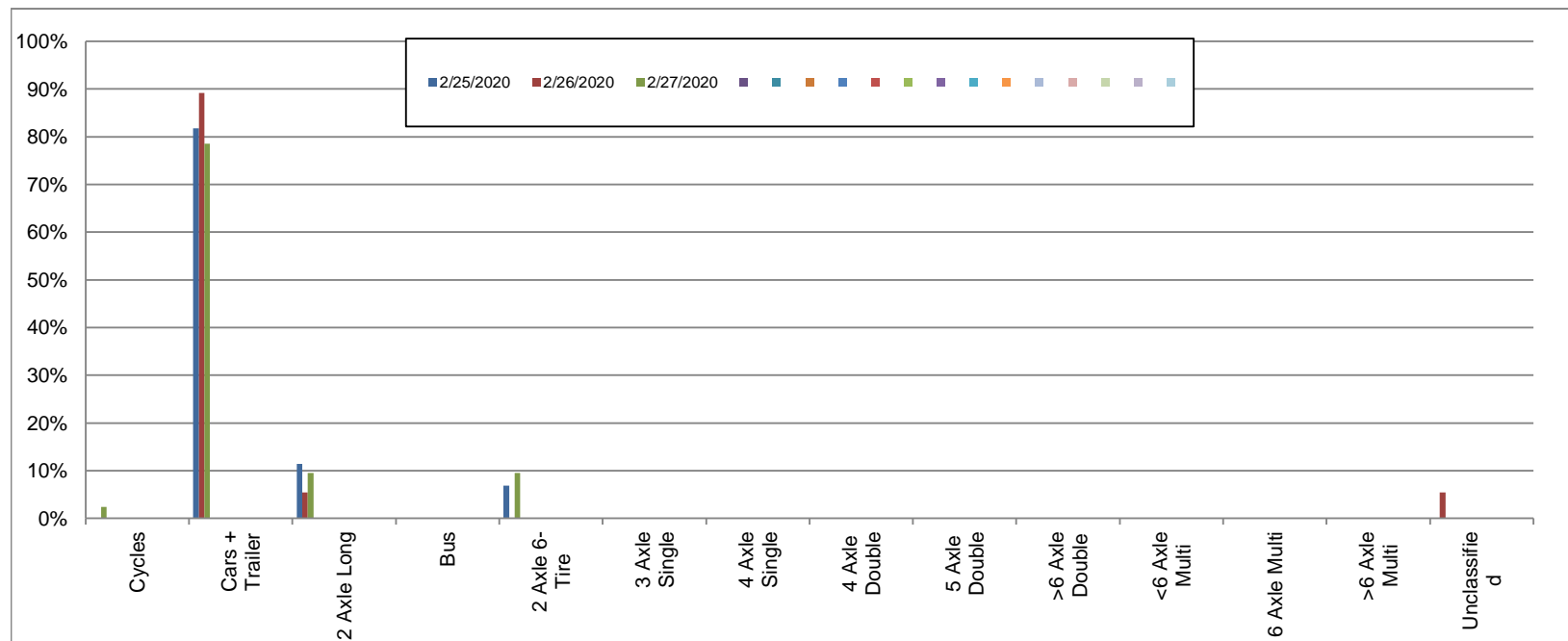
Eastbound

February 25, 2020 to February 27, 2020

Daily Class Bin Percentages															Daily Class Bin Volumes														
Bin #	1	2	3	4	5	6	7	8	9	10	11	12	13	14	1	2	3	4	5	6	7	8	9	10	11	12	13	14	Total Volume
Bin Class	Cycles	Cars + Trailer	2 Axle Long	Bus	2 Axle 6-Tire	3 Axle Single	4 Axle Single	4 Axle Double	5 Axle Double	>6 Axle Double	<6 Axle Multi	6 Axle Multi	>6 Axle Multi	Unclassified	Cycles	Cars + Trailer	2 Axle Long	Bus	2 Axle 6-Tire	3 Axle Single	4 Axle Single	4 Axle Double	5 Axle Double	>6 Axle Double	<6 Axle Multi	6 Axle Multi	>6 Axle Multi	Unclassified	
2/25/2020	0.0%	81.8%	11.4%	0.0%	6.8%	0.0%	0.0%	0.0%	0.0%	0.0%	0.0%	0.0%	0.0%	0.0%	0	36	5	0	3	0	0	0	0	0	0	0	0	0	44
2/26/2020	0.0%	89.2%	5.4%	0.0%	0.0%	0.0%	0.0%	0.0%	0.0%	0.0%	0.0%	0.0%	0.0%	5.4%	0	33	2	0	0	0	0	0	0	0	0	0	0	2	37
2/27/2020	2.4%	78.6%	9.5%	0.0%	9.5%	0.0%	0.0%	0.0%	0.0%	0.0%	0.0%	0.0%	0.0%	0.0%	1	33	4	0	4	0	0	0	0	0	0	0	0	0	42
<b>Total</b>	<b>0.8%</b>	<b>82.9%</b>	<b>8.9%</b>	<b>0.0%</b>	<b>5.7%</b>	<b>0.0%</b>	<b>0.0%</b>	<b>0.0%</b>	<b>0.0%</b>	<b>0.0%</b>	<b>0.0%</b>	<b>0.0%</b>	<b>0.0%</b>	<b>1.6%</b>	<b>1</b>	<b>102</b>	<b>11</b>	<b>0</b>	<b>7</b>	<b>0</b>	<b>0</b>	<b>0</b>	<b>0</b>	<b>0</b>	<b>0</b>	<b>0</b>	<b>2</b>	<b>123</b>	

**Class Data Summary**

Bin #	1	2	3	4	5	6	7	8	9	10	11	12	13	14	Total Volume
Bin Class	Cycles	Cars + Trailer	2 Axle Long	Bus	2 Axle 6-Tire	3 Axle Single	4 Axle Single	4 Axle Double	5 Axle Double	>6 Axle Double	<6 Axle Multi	6 Axle Multi	>6 Axle Multi	Unclassified	Total Volume
<b>Survey Total</b>	1	102	11	0	7	0	0	0	0	0	0	0	0	2	123
<b>% Total</b>	0.8%	82.9%	8.9%	0.0%	5.7%	0.0%	0.0%	0.0%	0.0%	0.0%	0.0%	0.0%	0.0%	1.6%	100%
<b>Accumulated %</b>	0.8%	83.7%	92.7%	92.7%	98.4%	98.4%	98.4%	98.4%	98.4%	98.4%	98.4%	98.4%	98.4%	100.0%	
<b>Inv. Accum. %</b>	99.2%	16.3%	7.3%	7.3%	1.6%	1.6%	1.6%	1.6%	1.6%	1.6%	1.6%	1.6%	1.6%	0.0%	



**Classification Descriptions**

Bin #	Bin Description
1	Motorcycles
2	Passenger cars, including those with recreational trailers
3	2-axle pick-ups, vans, and RVs, including those with recreational trailers
4	Buses
5	2-axle, 6-tire single units
6	3-axle single units
7	4-axle single units
8	3-axle or 4-axle double unit
9	5-axle double unit
10	6-, 7-, or 8-axle double unit
11	5-axle multiple unit
12	6-axle multiple unit
13	7-or-more-axle multiple unit
14	Vehicles that could not be classified

Site notes: